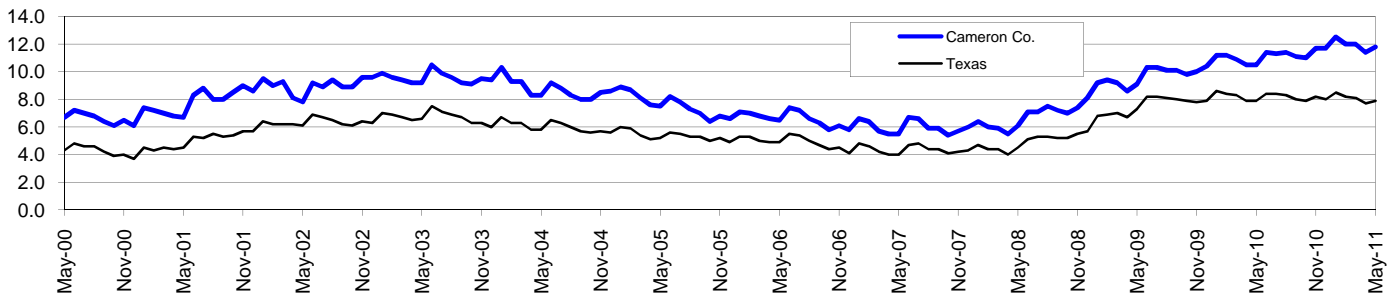


Cameron County Workforce Development Area*

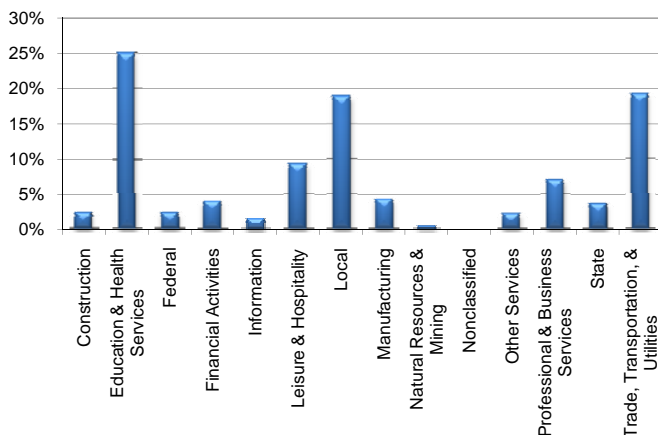
May 2011

Cameron County WDA					Texas				
	CLF	Employed	Unemployed	Rate		CLF	Employed	Unemployed	Rate
May-11	158,108	139,502	18,606	11.8	May-11	12,241,965	11,269,620	972,345	7.9
Apr-11	159,460	141,216	18,244	11.4	Apr-11	12,248,196	11,306,155	942,041	7.7
May-10	157,175	140,617	16,558	10.5	May-10	12,107,298	11,155,447	951,851	7.9

Historical Unemployment Rates



Cameron County WDA Industry Composition 4th Quarter 2010



Total WDA Claims

	May-11	Apr-11	May-10	OTY
Initial	1,549	1,601	1,570	-21
Continued	10,077	8,881	10,376	-299
Continued Claims for the Week of the 12th				
Continued	770	701	847	-77

Texas Unemployment Insurance Claims Filed

	May-11	Apr-11	May-10	OTY
Initial	87,531	85,301	88,051	-520
Continued	859,172	736,646	1,004,012	-144,840
Continued Claims for the Week of the 12th				
Continued	172,421	171,736	211,257	-38,836

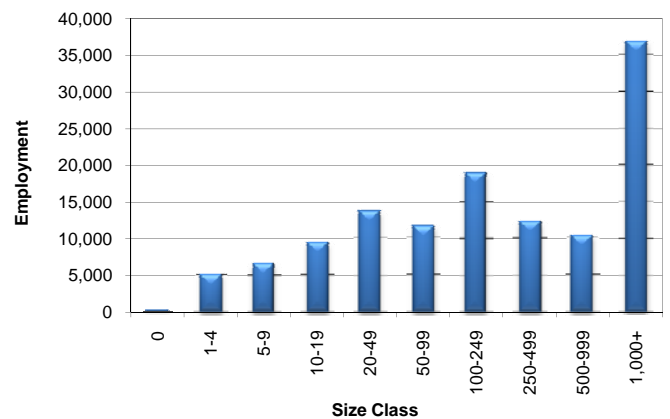
Cameron County WDA Average Weekly Wage

	Cameron Co.	WDA Qtr. Chg.	Texas
4th Quarter 2010	\$609.32	\$48.24	\$976.43
3rd Quarter 2010	\$561.08	WDA OTY Chg.	\$876.28
4th Quarter 2009	\$597.47	\$11.85	\$943.73

NAICS Covered Employment Quarterly Data 4th Quarter 2010

SUPER SECTOR	Employment	Change	
		Quarter	Year
Construction	2,993	-116	-436
Education & Health Services	31,243	313	1,314
Federal	2,942	-50	138
Financial Activities	5,062	36	214
Information	1,976	8	-147
Leisure & Hospitality	11,537	-712	287
Local	23,468	1,113	47
Manufacturing	5,349	-137	-713
Natural Resources & Mining	586	-103	-2
Nonclassified	24	-4	14
Other Services	2,643	-19	-430
Professional & Business Services	8,902	122	403
State	4,545	340	244
Trade, Transportation, & Utilities	24,067	573	979
TOTAL	125,337	1,364	1,912

Size Class Employment Composition 4th Quarter 2010



*Counties in WDA: Cameron